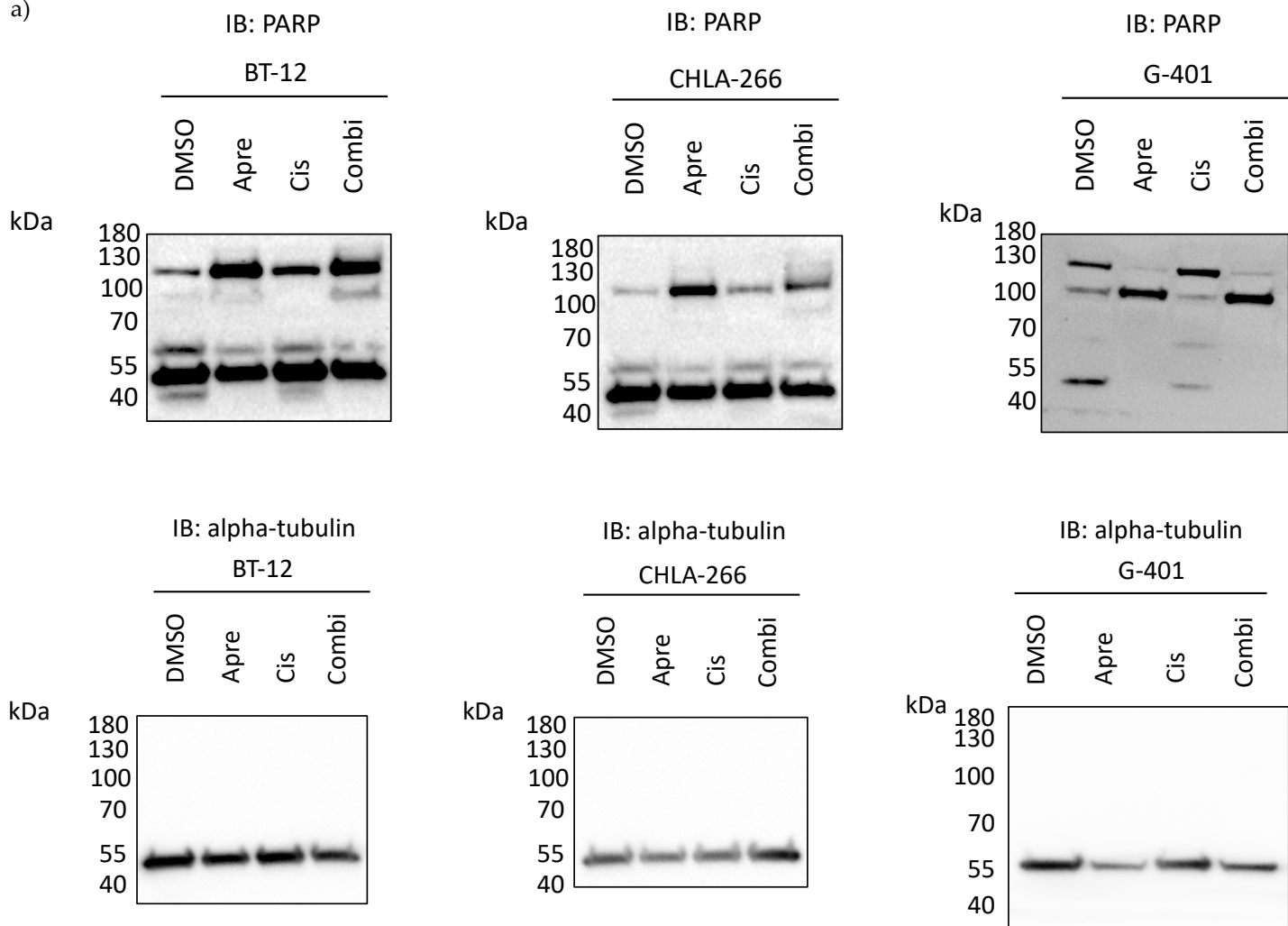
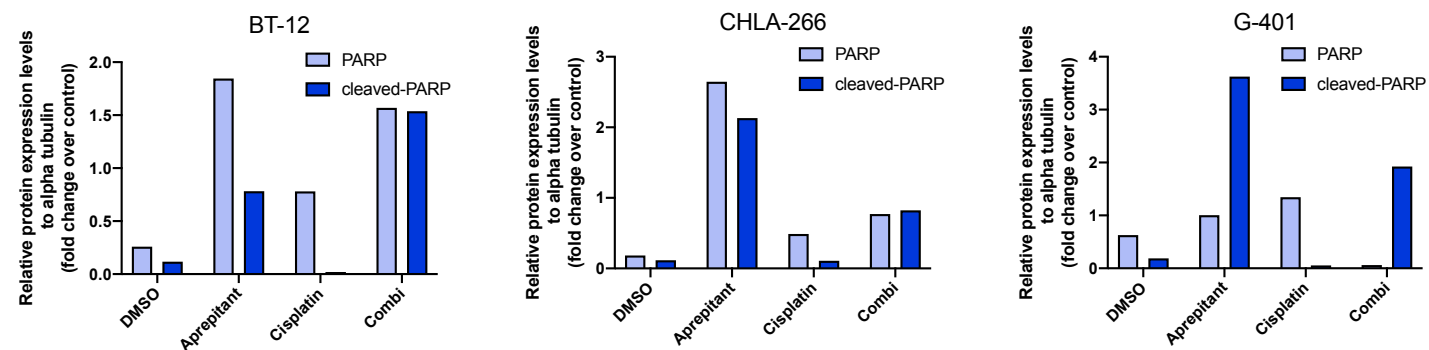


a)



b)



**Supplementary Data Figure S4.** (a) Western blot analysis of G-401, BT-12 and CHLA-266 upon treatment with aprepitant (APR, 40-50  $\mu$ M), cisplatin (CIS 20  $\mu$ M) and aprepitant + cisplatin (COMBI) (48h). DMSO used as a treatment control. Shown is the second representative. Blots are representative of n=2. (b) Densitometry analysis of western blots. Relative protein expression levels were normalized to alpha tubulin expression.